

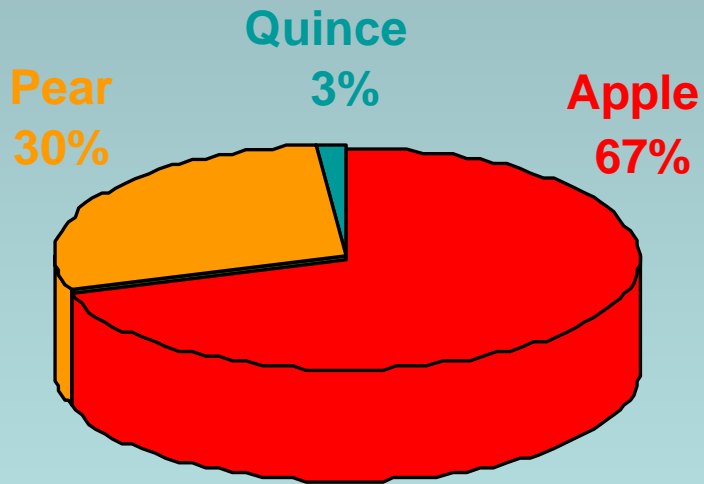


Occurrence of '*Candidatus phytoplasma pyri*' in pear growing area of Republic of Srpska (B&H)

Biljana Lolić and Duška Delić
University of Banjaluka, Faculty of Agriculture

Pome fruit production in B&H

- STONE FRUITS (54%)
- POME FRUITS (35%)

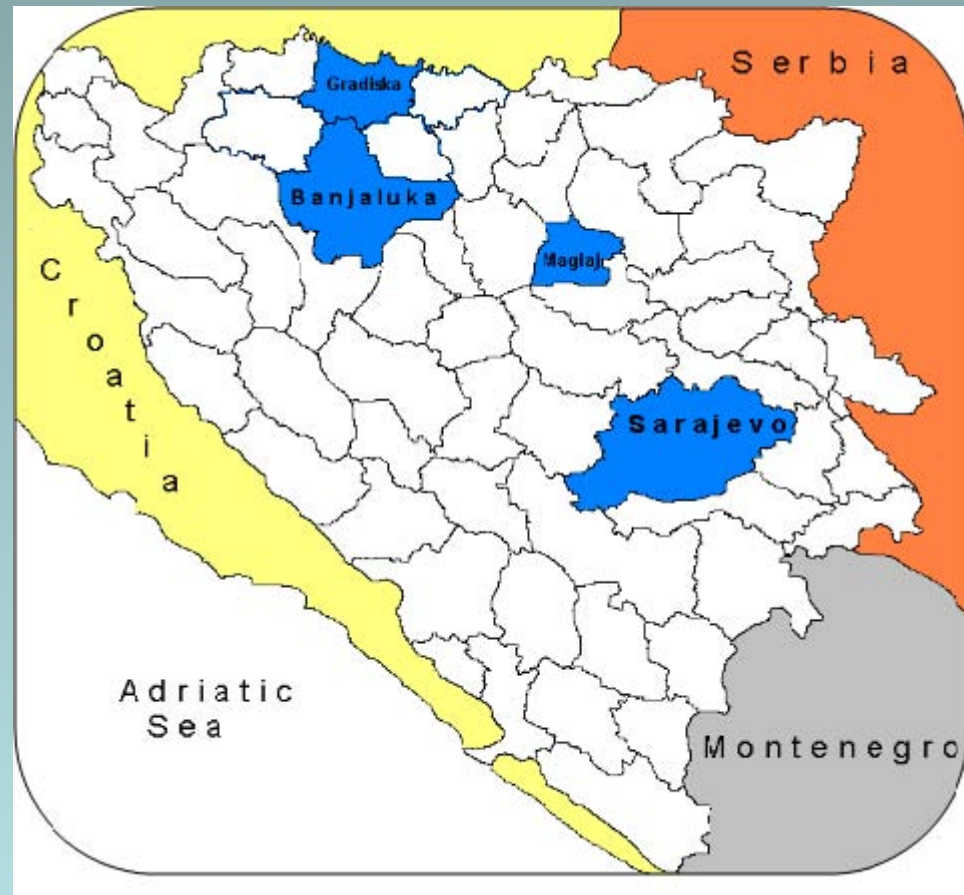


'*Candidatus phytoplasma pyri*' in Bosnia and Herzegovina

First monitoring during in B&H:
autumn 2004 and spring 2005

The presence of '*Candidatus
phytoplasma pyri*' (Duduk *et.al.*,
2005)

Vector *Cacopsylla pyri* was
identified in several pear
growing regions (Delić *et. al.*
OEPP/EPPO Bulletin 37(2), 2007)



PD phytoplasma in neighboring countries

Phytoplasma diseases:

- Apple proliferation associated with '*Candidatus Phytoplasma mali*'
- Pear decline associated with '*Candidatus Phytoplasma pyri*'
- European stone fruit yellows associated with '*Candidatus Phytoplasma prunorum*'

Croatia – Saric & Cvjetkovic 1985

Serbia – Tanaskovic & Carraro, 2003; Duduk, *et.al.*, 2005



Pear samples

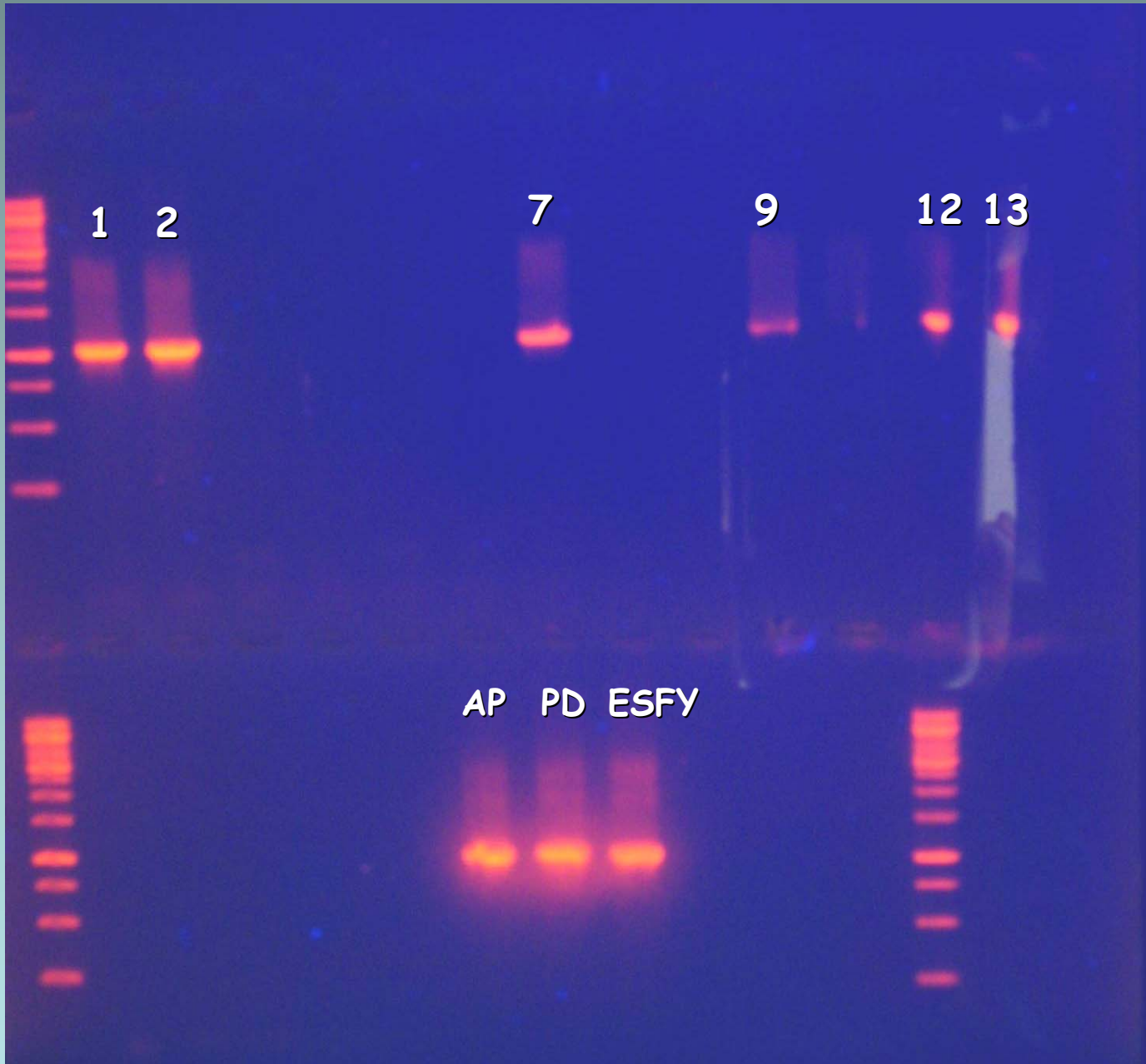






Apple samples





Check 12
and 13
samples

Further studies ...

Continue with the work

Continue monitoring in all pome fruit areas

Include monitoring and sampling in:

bordering

nurseries

other growing areas

