



***Hyalesthes obsoletus*, vector of bois noir: distribution and host plant preferences in Switzerland**

**Patrik Kehrli, Sébastien Kessler,
Santiago Schaerer & Nicolas Delabays**

COST Action FA0807, Sitges 1 February 2010



Bois noir

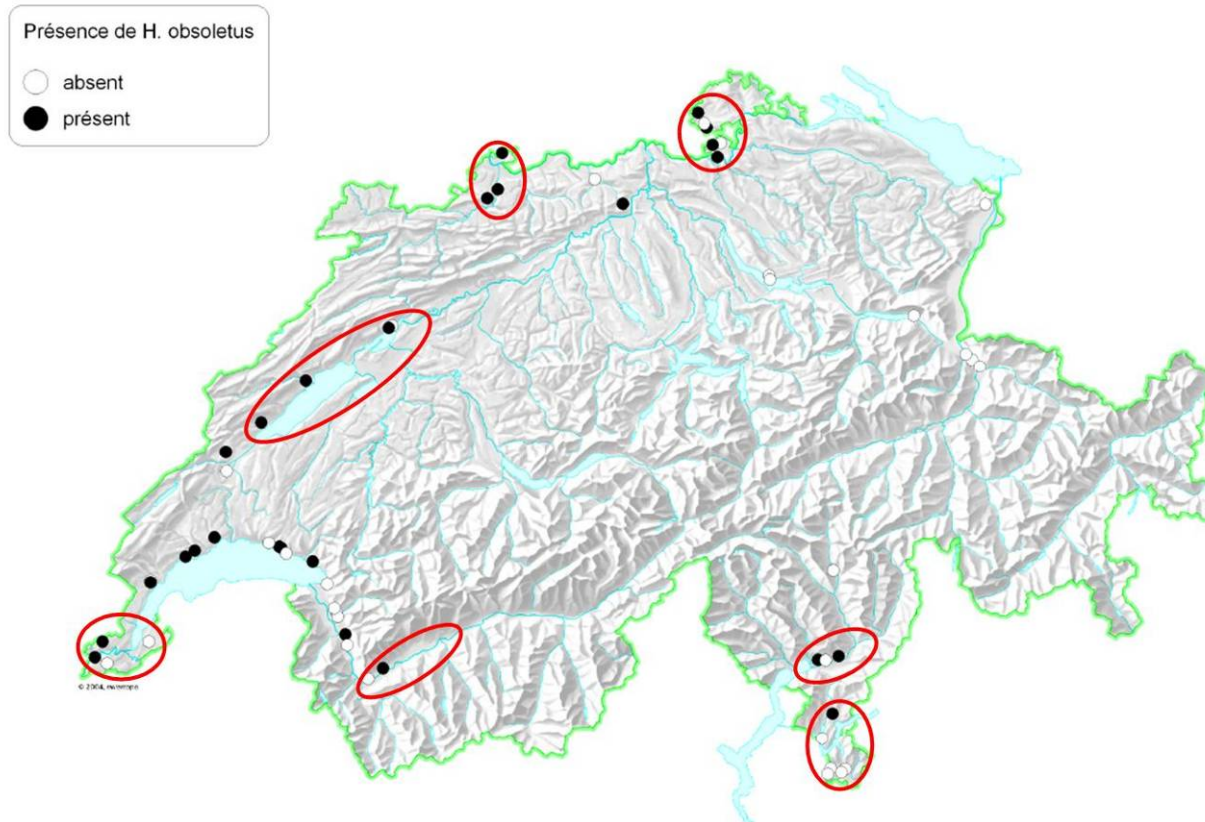
Situation in Switzerland





Hyalesthes obsoletus

National survey 2008



667 individuals were found on nettle, 8 on bindweed



Bois noir

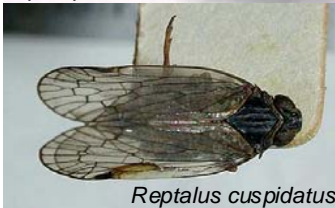
Vector



Cicadella viridis



Aphrophora alni



Reptalus cuspidatus



Macrosteles quadripunctulatus



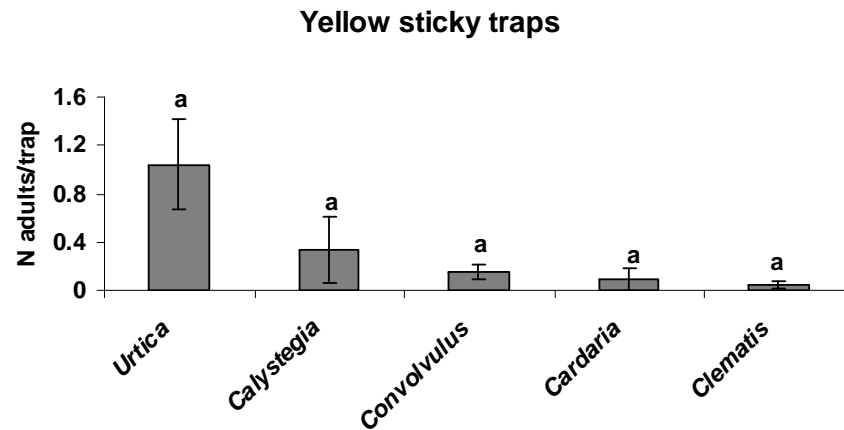
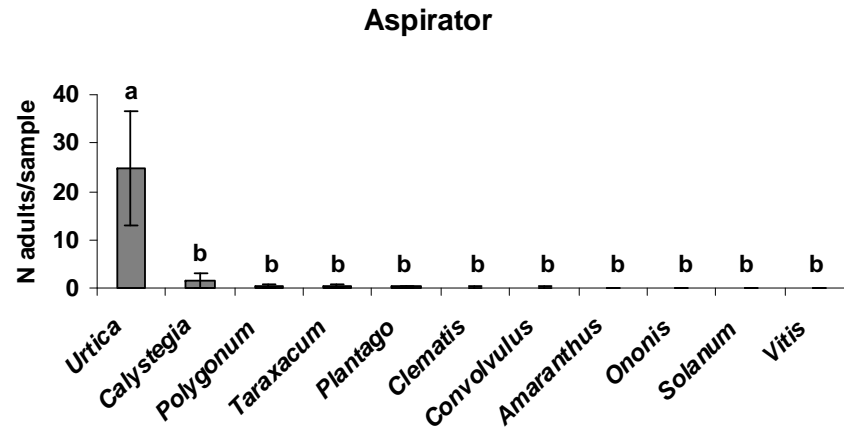
Hyalesthes obsoletus

Of 33 taxa analysed, only *Hyalesthes obsoletus* was positive for the stolbur 16Sr-XII-A group



Hyalesthes obsoletus

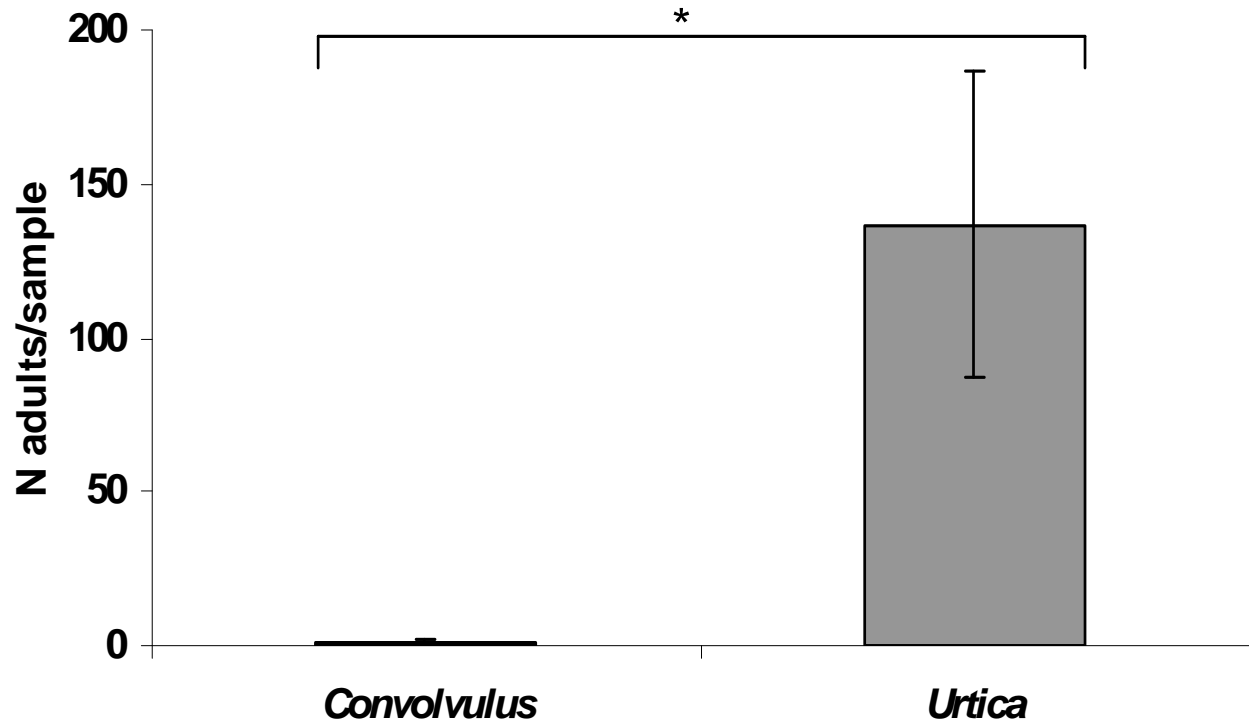
Host plant preferences





Hyalesthes obsoletus

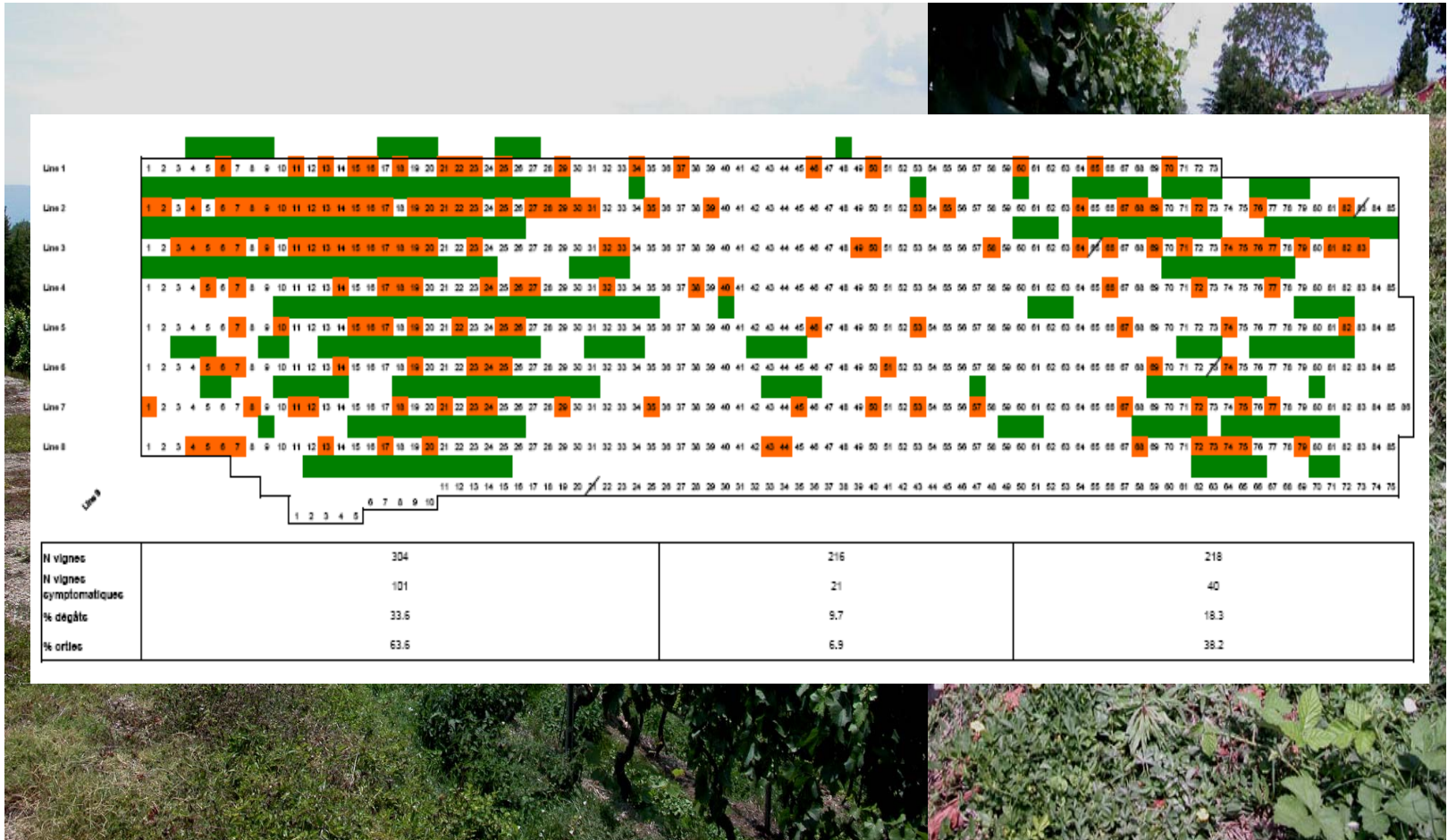
Host plant preferences





Hyalesthes obsoletus

Host plant preferences



COST Action FA0807 | Sitges 1/2/2010

P. Kehrl et al.

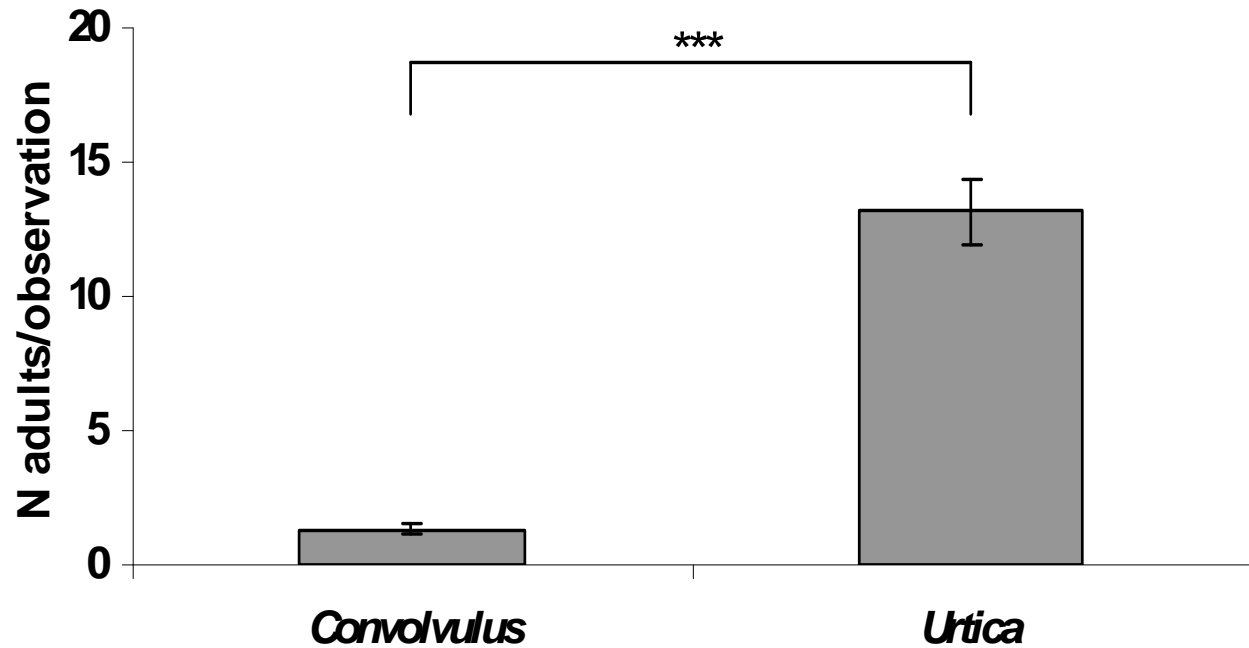


Hyalesthes obsoletus

Host plant preferences



Location of observed insects





Perspectives

- Point of time for weed control
- Transmission experiments
- Susceptibility of different grape varieties
- Mechanism of host finding (visual and olfactory cues)